





# Acknowledgement of Country

Police-Citizens Youth Clubs Queensland

would like to acknowledge and pay our respects to the traditional custodians of the land, the Yugambeh people, and their continuing connection to the land, sea and community.

We also acknowledge and pay our respects to Elders, past and present.

# Contents

Acknowledgement of Country	2
Contents	3
Our Vision, Mission and Purpose	4
About Us	5
Management Team Message	6
Our Supporters	7
Our Team	8
PCYC School Partnerships	9
PCYC State Youth Leadership Program	10
PCYC Youth Intervention Programs	11
Our Venue	12
New Office Building Project	13
Wagawn Staff Room Upgrade Project	15
Car Park Upgrade	17
Habitat Restoration	18
Financial Summary	20
Audited Financial Statements	21
Wagawn Hall Concept Plan	24

PCYC Bornhoffen is a member of



Queensland Outdoor Recreation Federation  
Outdoor Educators Association of Queensland  
Australian Association for Bush Adventure Therapy  
Land for Wildlife

Text/photos/layout PCYC Bornhoffen

Thanks to all the staff and participants who appear in images in this report

© Queensland Police-Citizens Youth Welfare Association 2015

## **PCYC Vision**

Police-Citizens Youth Clubs - Enhancing Queensland Communities  
through youth development

## **PCYC Mission**

Police-Citizens Youth Clubs in partnership with government, community, business and families -  
achieving excellence in youth development by encouraging participation in  
recreational, sporting, cultural and welfare programs

## **PCYC Bornhoffen's Purpose**

To inspire young people to be self-aware, to build their social skills and  
to contribute positively to their community

# About Us

Bornhoffen is a Police-Citizens Youth Clubs (PCYC) Leadership Development Centre.

We are a not for profit community organisation and social enterprise located at Natural Bridge in the Gold Coast hinterland.

We are a service of PCYC Queensland.

**Our purpose is to inspire young people to be self aware, to build their social skills and to contribute positively to their community.**

We work in partnership with schools and community organisations to deliver leadership development programs at Bornhoffen or any place in Queensland.

Our two group accommodation centres at our spectacular mountain property are available for use by schools, community organisations, special needs groups, churches and family groups with the option of professional catering or self catering.

To find out more about our services

talk to us on (07) 5533 6154  
email [admin@bornhoffenpcyc.org.au](mailto:admin@bornhoffenpcyc.org.au)  
visit [www.bornhoffenpcyc.org.au](http://www.bornhoffenpcyc.org.au)





# Management Team Message

The best way to find yourself is to lose yourself in the service of others - Mahatma Gandhi

We want to thank the staff from the 152 organisations that we have worked in partnership with during 2014-15. Without these leaders and decision makers who choose to bring young people to PCYC Bornhoffen from their school or community organisation for an experience, we would not exist.

Most of these adults are doing so as volunteers or contributing many extra hours away from family and home to make these experiences possible. They do it because they see the benefits of genuine, authentic learning experiences for young people. Opportunities for young people to increase their self-awareness and build their social skills have never been more vital.

We want to thank the young people who are participants in our programs - who allow themselves to be challenged, to stretch their own boundaries and experience personal growth. Once again, without you, our purpose ceases to exist.

The amount of work that is required to keep the 'Bornhoffen machine' running is not obvious to the casual visitor. We want to thank each and every member of the Bornhoffen team who contribute so much across a diverse range of tasks and roles - facilitation, catering, program management, cleaning, venue maintenance, grounds/property, administration and customer service. It's all vitally important and everyone makes an essential contribution.

It has been a decade since we took on the leadership and management of PCYC Bornhoffen. What a privilege. Apart from the splendid natural beauty of the place, the other great part of working here is the diverse groups of people who visit here and the staff team that serve them. This place can be pretty busy when 120 people need to be fed, maintenance projects need to be pushed to completion, programs need to go on in the rain and urgent customer enquiries need to be responded to.

Thanks to all of the staff, volunteers, teachers and adult leaders who choose to serve others in this amazing space.

Arron Sullivan and Mick Foran - Bornhoffen Co-Managers



Mick and Arron with members of our PCYC Board of Directors during a visit and tour of PCYC Bornhoffen

# Our Supporters

PCYC Bornhoffen relies on the support of the community to provide and improve our services. Sincere thanks to the following organisations and individuals who have supported us during 2014-15.

**Andelaine** - allow us to access their neighbouring property to undertake bushwalking and overnight camping with young people at no charge

**Australian Government** - who approved three Green Army projects for 2015 and 2016 to support habitat restoration

**Australian Government Community Energy Efficiency Program** - provided funds towards an energy efficient lighting upgrade across the site

**Conservation Volunteers Australia** - partner with us to provide a Green Army team and supervisor to undertake habitat restoration

**Dennis Cairns and Associates** - provided hydraulic plan drawings for our ensuite construction project at no charge

**Dryhurst Stuart Architects** - provided architectural services at a reduced rate to develop our Wagawn Hall Concept Plan

**Envirotech Treatment Systems** - provided septic system certification for our ensuite construction project at no charge

**Errol Murfet Builder** - undertook commercial construction project supervision and other support of our office building for a nominal sum of \$1

**Fulton Hogan Constructions** - donated a re-seal of our Hobwee venue top car park (approximate commercial cost \$10,000)

**Jupiters Casino Community Benefit Fund** - provided \$40,000 funding to construct four new staff ensuites and make improvements to staff accommodation rooms

**Queensland Government Department of Environment and Heritage Protection** - provided \$34,000 to undertake habitat restoration and volunteer engagement

**Reuben Pelerman Benevolent Foundation** - provided a \$2,500 donation earmarked for construction of a new basketball half court

**Volunteers from PCYC and other community organisations** - provided voluntary assistance with community service and habitat restoration projects

# Our Team

PCYC Bornhoffen is a beautiful environment but we think it is our exceptional people that set it apart. We rely on a small team with a diverse range of skills to provide our services across programs, catering, venue, administration and customer service. Our staff team during 2014-15 included:

Mick Foran	Co-Manager (Venue Services)
Arron Sullivan	Co-Manager (Leadership Development)
Michael Beer	Catering Coordinator
Mike Coker	Leadership Development Coordinator
Ken Hartley	Venue Coordinator
Lorna Peach	Administration Officer
Jodie Alderton	Venue Support Officer (Catering)
Hayden Beer	Venue Support Officer (Catering)
Anita Burns	Leadership Development Facilitator
Jason Brooking	Venue Support Officer/Habitat Restoration Project Worker
Jai Canobie-Harris	Leadership Development Consultant
Peter Egger	Leadership Development Facilitator
Barry Ferguson	Venue Support Officer
Ross Hague	Venue Support Officer
Cherie MacDonald	Venue Support Officer (Catering)
Emma Perske	Leadership Development Consultant
Luke Shaman	Venue Support Officer
Ingrid Stafelu	Leadership Development Facilitator
Nadeen Wells	Venue Support Officer (Catering)

We also employ approximately 25 additional contract program staff throughout the year.

Thanks to everyone from our staff team for their positive approach, professionalism and commitment.





# PCYC School Partnerships

This year, we have focused Leadership Development program efforts on our school based partnerships.

The benefits of focusing our energy here pays off in long term partnerships with public and private schools and also assists our financial sustainability.

With learning at the heart of what we do, our commitment to education is our highest priority. We recognise the social and life changing benefits provided by quality education. Our service aims to contribute to that.

In hospitality, they say people are your service. This could not be more true for us in experiential and adventure based programming. Just as teachers are the backbone of any school, facilitators and adult leaders are the life blood of programs.

It is the day to day decisions, leadership, influence and support offered by these people that shape our young people.



# PCYC State Youth Leadership Program

PCYC Bornhoffen has been hosting PCYC State Youth Leadership Programs since 2000. We were again fortunate to deliver four PCYC State Youth Leadership Programs during 2014-15 in partnership with members of the State Youth Programs Team and PCYC Club staff. Programs delivered were:

July 2014 - SYLP Level 2 (6 days)

September 2014 - SYLP Level 1 (6 days)

January 2015 - SYLP Level 1 (6 days)

April 2015 - SYLP Level 3 (7 days)

These programs involved a total of 177 young people from our PCYC Clubs across Queensland.

Here are some recent words from a past SYLP participant.

*"This week I climbed a mountain in Peru. At times it was extremely difficult but I found myself thinking back to the many things I have learnt from all of you specifically and from the PCYC.*

*I just wanted to send a message to let you know how grateful and thankful I am for the time and energy you have each invested in me because without that I don't know if I could have climbed that mountain or that I would have even enjoyed it. It was PCYC camps where I climbed my first hills/mountains and where I learnt to climb them both physically and mentally and where my love of outdoor adventures began!*

*It is because of you and these opportunities that I know I can have dreams and goals and achieve them. I know that in times of struggle (not just physical) I can utilise the skills I learnt to come out on top and even if I don't, how to pick myself up.*

*I don't know if I have ever said it before or if I can say it enough but thank you so much for everything you have done for me and in helping to shape the person I am today"*

*Jess - past SYLP Participant*





# PCYC Youth Intervention Programs

Youth crime prevention is part of the core business of PCYC.

This year saw us continue our intervention work with young people at risk.

This work was undertaken through partnerships with our PCYC State Office, the Queensland Police Service, Boystown and Catholic Education.

It included multiple programs delivered with small groups in Central Queensland and in our own Gold Coast hinterland area.

This is intensive work often using lengthy programs (9 day self-sustained journeys) and involving young people with challenging behaviours. This work is tough on our staff, our partner agencies and for the participants involved but it does make a positive impact.

## UNIVERSITY OF CANBERRA EVALUATION

An external evaluation was undertaken by Daniel Bowen and Dr James Neill from the University of Canberra. This was finalised in January 2015.

Key points that we took from the evaluation process included:

- that we were on the track with our approach to young people at risk
- that the program has a positive impact on young people in both the social skill and psychological wellness domains
- that we are well placed to deliver this work
- that there is room to further improve our practice

With nearly a decade of time invested in the Catalyst Project, there is much to reflect on. The past year has been about taking stock to rethink and reflect on what works well and what we can improve.

It is our intent to continue to deliver therapeutic adventure work with young people at risk.





# Our Venue

PCYC Bornhoffen is an exceptional venue for youth development. We aim to provide group accommodation and retreat facilities that are clean, comfortable and affordable for schools, community groups and families. We provide professional group catering with a focus on meals that are nutritious and tasty. We continue to permit self-caterers access to commercial kitchens to allow community access and affordability.

We always do our best to engage with our users to obtain feedback about our services, what we are doing well and where we can improve.

## KEY IMPROVEMENT PROJECTS 2014-15

- New Office Building Project
- Bitumen two-coat seal on Hobwee top car park
- Two new combi-therm ovens purchased and installed in main commercial kitchen
- Wagawn Staff Rooms and Ensuities Upgrade (4 new bathrooms)
- New native gardens/landscaping around new office, Hobwee, pool and other grounds areas
- Clearance of rocks/boulders and grassing of areas to expand maintained grass area
- New entry signage for Wagawn venue
- Upgrade of stair railings on Hobwee
- Installation of anti-slip stair nosing across site
- New commercial gas BBQ
- New LED TV for Hobwee Dining Hall
- Installation of carpet panels and curtains in Wagawn Dining Hall to improve acoustics
- Removal of old sports court fence
- Construction of new flammable goods storage shed
- Continued weed control and habitat restoration on property



# New Office Building

Our new office building has been a landmark project in PCYC Bornhoffen's ten year journey as a Leadership Development Centre. After many years of 'making do' with basic office space, we have invested in an architect designed, professional standard work environment for our staff.

Much of the internal construction work was undertaken by Bornhoffen staff, Arron Sullivan, Ken Hartley and Jason Brooking, with supervision by a commercial builder, assistance from various trades and other Bornhoffen staff lending a hand with painting, insulating, concreting, landscaping and other works.





# New Office Building

## SINCERE THANKS TO

Errol Murfet Builder

Dennis Cairns and Associates Hydraulic Engineers

Dryhurst Stuart Architects

Various tradespersons who contributed services at reduced rates

PCYC Bornhoffen staff who all contributed in some way to the project



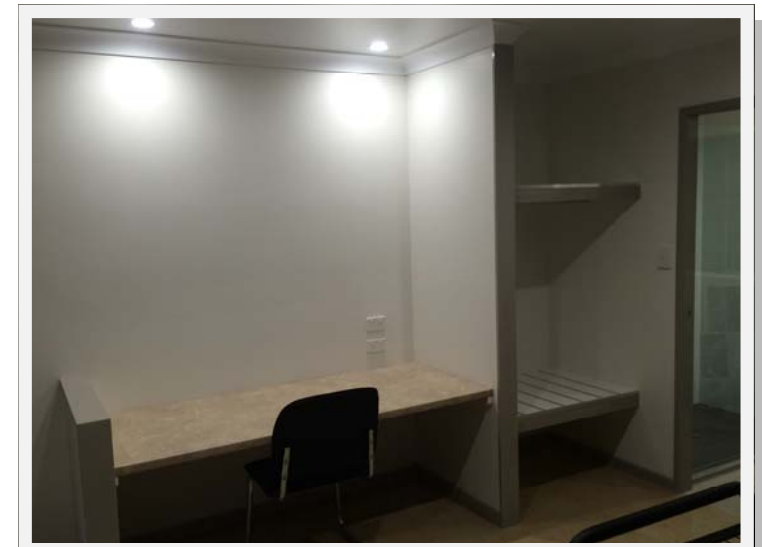


# Wagawn Staff Rooms Upgrade

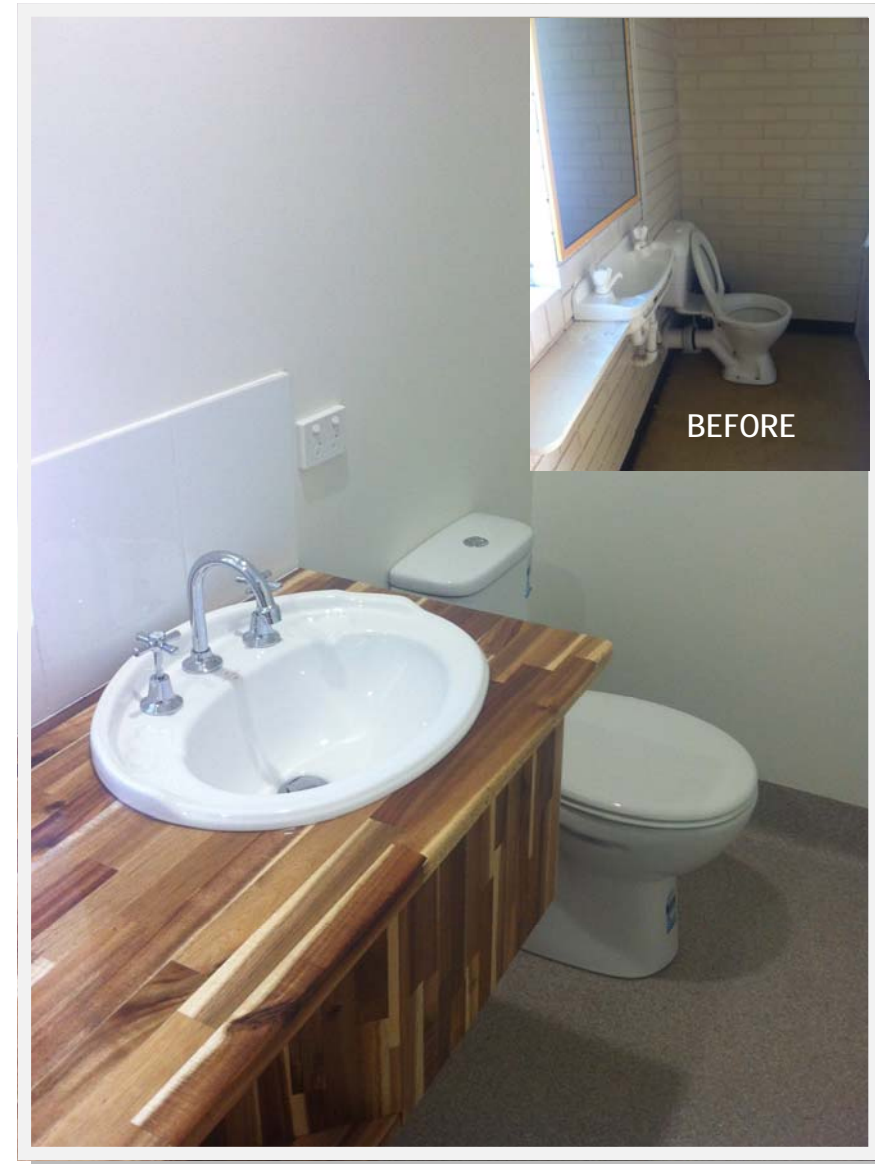
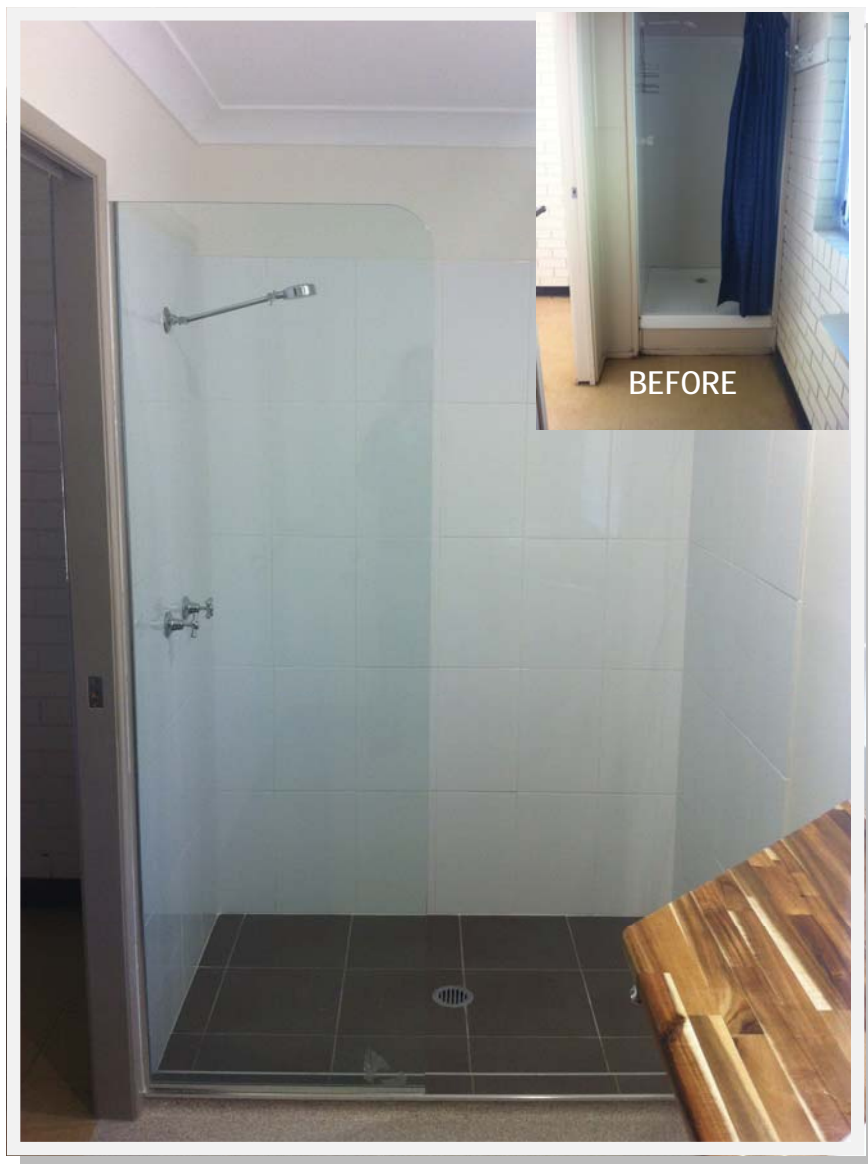
Four new staff ensuites were constructed in Wagawn. This project was Stage 11 of our Master Plan Redevelopment and was made possible through a Jupiters Casino Community Benefit Fund grant.

The total project cost was \$40,000. It included demolition of the existing two ensuites, all new external drainage, new ceilings, LED lighting, all new bathroom fittings, tiling and commercial vinyl flooring. Due to costs savings and community support, we were able to provide additional improvements including a built in cupboard, desk and upgraded lighting power for the hardworking teachers, leaders, supervisors and volunteers who stay Bornhoffen.

Special thanks to Dennis Cairns and Associates Hydraulic Engineers who undertook the hydraulic drawings at no cost, Enviro-tech Treatment Systems who certified additional hydraulic load on the on-site septic system at no cost and Daniel Gray Plumbing for his invaluable assistance with this project.



# Wagawn Staff Rooms Upgrade





# Car Park Upgrade

Fulton Hogan Constructions were engaged by the Queensland Government to undertake road repairs at Natural Bridge resulting from damage sustained during ex-TC Oswald in January 2013.

PCYC Bornhoffen was used as a truck turnaround area during the construction period. At the completion of the project, Fulton Hogan agreed to re-surface one of our car parks with two coat seal at no charge.




Thanks to Fulton Hogan Constructions for their donation of services to PCYC Bornhoffen.





# Habitat Restoration

A photograph of a small stream flowing over rocks, surrounded by green reeds and fallen leaves. The water is clear and turbulent as it flows over the dark, wet rocks. The reeds are tall and green, with some fallen leaves scattered on the rocks and in the water. The overall scene is a natural, riparian environment.

PCYC Bornhoffen's location in the headwaters of the Nerang River catchment and adjacent to the World Heritage listed Lamington National Park makes it a strategic location for investment in habitat restoration and protection



# Habitat Restoration

PCYC Bornhoffen has been undertaking habitat restoration work on the property since 2007. Projects have been funded by through various sources over time. Our current projects include:

## QUEENSLAND GOVERNMENT EVERYONE'S ENVIRONMENT PROJECT

This project will run for two years and aims to engage young people as volunteers to undertake 'hands on' practical habitat restoration - learning about the rainforest and how we are going about restoring habitat for wildlife. The project aims to engage with over 600 people over 40 volunteer work days to undertake weed control, remove old farm rubbish and plant at least 3,200 trees.

Volunteer work days are supervised by a professional habitat restoration worker and the project also allows for follow up work and maintenance to be done on a further 100 during the project.

## AUSTRALIAN GOVERNMENT GREEN ARMY

Green Army is a hands-on, practical environmental action programme that supports local environment and heritage conservation projects across Australia. It is funded by the Australian Government. PCYC Bornhoffen is partnering with Conservation Volunteers Australia to provide three approved Green Army projects. Each project involves a team of up to nine participants aged 17-24 years along with a team supervisor.

Project 1 commenced in April 2015 and will run for twenty weeks. The team will aim to reduce weeds over a 10 hectare area, plant 2,000 trees, collect/propagate 200 seeds and make key improvements to our walking track system.

Thanks to the Australian Government Department of the Environment, Conservation Volunteers Australia and the Queensland Government Department of Environment and Heritage Protection for their support with these projects.





# Financial Summary

SUMMARY PROFIT AND LOSS STATEMENT	2013-14	2014-15
<b>INCOME</b>		
Service Delivery Income	1,172,279	1,279,179
Fundraising Income	2,551	2,500
Operational Grant Income	47,668	22,562
Sundry Income	46,187	7,096
<b>TOTAL INCOME</b>	<b>1,268,685</b>	<b>1,311,337</b>
<b>EXPENSES</b>		
Service Delivery Expenses	784,247	855,830
Fundraising Expenses	0	0
Operational Grant Expenses	47,668	22,562
Overhead Expenses	404,330	359,443
<b>TOTAL EXPENSES</b>	<b>1,236,245</b>	<b>1,237,835</b>
<b>NET OPERATING PROFIT</b>	<b>32,440</b>	<b>73,502</b>
Add Capital Grants	0	36,695
Less Depreciation Expense	30,962	34,923
<b>NET PROFIT AFTER CAPITAL GRANTS AND DEPRECIATION</b>	<b>1,478</b>	<b>75,275</b>

Bornhoffen is a business unit of PCYC State Office. It has a civilian co-management team which is accountable to the Chief Executive Officer via a Zone Development Manager and the General Manager (Operations).

Bornhoffen PCYC is required to operate as a financially sustainable entity. We receive no operational funding from government and need to generate income to cover all expenditure including wages, operating costs, overheads, maintenance and utilities.

SUMMARY BALANCE SHEET	2013-14	2014-15
<b>ACCUMULATED FUNDS</b>		
Balance at 1 July 2014	1,819,013	1,820,491
Current Years Profit/ (Loss)	1,478	75,275
<b>ACCUMULATED FUNDS AT 30 JUNE 2015</b>	<b>1,820,491</b>	<b>1,895,765</b>
<b>REPRESENTED BY</b>		
CURRENT ASSETS	278,709	330,514
NON-CURRENT ASSETS	1,964,352	2,001,804
<b>TOTAL ASSETS</b>	<b>2,243,062</b>	<b>2,332,318</b>
<b>LESS LIABILITIES</b>	<b>422,571</b>	<b>436,553</b>
<b>NET ASSETS</b>	<b>1,820,491</b>	<b>1,895,765</b>

Any surplus funds generated by the business unit are retained for future replacement of assets or re-investment in facilities and services.

The business unit achieved an operating profit result of \$73k in 2014-15 and a net profit after capital grants and depreciation of \$75k. This was achieved through a combination of increased service delivery income (+\$107k on last year) and overhead costs reductions (-\$45k on last year).

# Audited Financial Statements 1

## QUEENSLAND POLICE-CITIZENS YOUTH WELFARE ASSOCIATION BORNHOFFEN PCYC

### INCOME STATEMENT PERIOD ENDING 30 JUNE 2015

2014	INCOME	2015
<b>Operational Income</b>		
435,914	Venue Income	478,253
(266,286)	Less Expenses	(274,452)
		<b>203,802</b>
351,854	Catering Income	410,881
(235,350)	Less Expenses	(260,094)
		<b>150,787</b>
384,511	Program Income	390,045
(282,611)	Less Expenses	(321,284)
		<b>68,761</b>
2,439	Fundraising Income	0
112	Fundraising Donations	2,500
0	Fundraising Expenses	0
		<b>2,500</b>
0	Canteen Trading	0
0	Less Expenses	0
		<b>0</b>
47,668	Operational Grant Income	22,562
(47,668)	Expenses against grants	(22,562)
		<b>0</b>
<b>Other Income</b>		
0	Memberships	0
0	Rentals & Hall Hire	0
0	Grant Management Fees	0
0	Operational Funding	0
0	Wage Subsidies	0
5,389	Interest Received	3,357
1,449	Profit on Disposal of Assets	3,739
39,348	Sundry Income	0
		<b>7,096</b>
<b>436,769</b>	<b>TOTAL INCOME</b>	<b>432,945</b>

Ennals  
Chartered  
Accountants

## QUEENSLAND POLICE-CITIZENS YOUTH WELFARE ASSOCIATION BORNHOFFEN PCYC

### INCOME STATEMENT PERIOD ENDING 30 JUNE 2015

2014	2015
436,769	432,945
<b>BROUGHT FORWARD</b>	
<b>LESS OVERHEAD EXPENSES</b>	
<b>Administration Staff Costs</b>	
297,646	254,510
1,858	1,803
4,335	4,839
1,168	2,089
4,500	9,077
1,477	2,355
<b>310,984</b>	<b>274,673</b>
<b>Overhead Costs</b>	
2,183	3,179
1,438	985
380	1,040
(144)	177
8,788	5,048
0	0
0	0
0	0
0	0
0	0
250	336
193	636
2,231	283
0	2,515
9,702	0
605	7,293
0	496
8,918	0
27,393	9,019
20,004	22,702
10,938	30,000
<b>92,880</b>	<b>84,810</b>
<b>Occupancy Costs</b>	
0	0
0	0
0	0
72	(41)
0	0
0	0
394	0
<b>466</b>	<b>(41)</b>
<b>404,330</b>	<b>359,443</b>
<b>32,440</b>	<b>73,502</b>
<b>NET OPERATING PROFIT / (LOSS)</b>	
0	36,695
(30,962)	(34,923)
<b>1,478</b>	<b>75,275</b>
<b>NET PROFIT / (LOSS) AFTER CAPITAL GRANTS &amp; DEP'N</b>	

Ennals  
Chartered  
Accountants



# Audited Financial Statements 2

## QUEENSLAND POLICE-CITIZENS YOUTH WELFARE ASSOCIATION BORNHOFFEN PCYC

### BALANCE SHEET FOR THE YEAR ENDED 30 JUNE 2015

2014		2015
	<b>ACCUMULATED FUNDS</b>	
1,819,013	Balance as at 1 July 2014	1,820,491
1,478	Current Years Profit/Loss	75,275
<u>1,820,491</u>		<u>1,895,765</u>
	<b>ACCUMULATED FUNDS AS AT 30 JUNE 2015</b>	
	<b>REPRESENTED BY:</b>	
	<b>CURRENT ASSETS</b>	
(5,916)	Cash at Bank	24,254
211,521	Investment Central Finance	287,880
839	Change Floats	508
72,185	Sundry Debtors	17,791
80	Prepayments	80
0	Stock and Merchandise on Hand	0
<u>278,710</u>		<u>330,514</u>
	<b>NON CURRENT ASSETS</b>	
1,964,352	Property, Plant & Equipment (See Note 3)	2,001,804
<u>2,243,062</u>		<u>2,332,318</u>
	<b>TOTAL ASSETS</b>	
	<b>LESS LIABILITIES</b>	
3,658	Trade Creditors	12,043
1,569	Accrued Expenses	4,455
44,581	Deferred Income	58,109
0	Deposits & Bonds	0
0	SAC Debtors & Advances	0
8,354	Unspent Operational Grants	14,293
97,139	Unspent Capital Grants	60,441
81,193	Leave Entitlements Current	91,691
32,754	Leave Entitlements Non Current	42,221
153,324	State Office Loans	153,300
<u>422,571</u>		<u>436,553</u>
<u>1,820,491</u>	<b>NET ASSETS</b>	<u>1,895,765</u>

Enmark  
Chartered  
Accountants

## QUEENSLAND POLICE-CITIZENS YOUTH WELFARE ASSOCIATION BORNHOFFEN PCYC

### NOTES TO AND FORMING PART OF THE ACCOUNTS FOR THE YEAR ENDED 30 JUNE 2015

#### NOTE 1 - SUMMARY OF SIGNIFICANT ACCOUNTING POLICIES

The financial statements are a special purpose financial report for the Bornhoffen PCYC branch of the Queensland Police-Citizens Youth Welfare Association (QPCYWA). The financial report has been prepared in order to satisfy the reporting requirements of the branch and in accordance with group operating instructions for reporting. As the branch is not a reporting entity the requirements of Australian Accounting Standards have not been considered. These have been accounted for in the consolidated financial report of the reporting entity (QPCYWA).

The financial report has been prepared on the accruals basis on the basis of historical cost. The following significant accounting policies have been adopted in the preparation of the report.

- **Depreciation**  
The depreciable amount of Equipment is depreciated over its estimated useful life on the straight line basis commencing from the time an asset is ready for use. The estimated useful lives applied range between 3 to 10 years. Building depreciation is accounted for in the consolidated financial report of the reporting entity (QPCYWA).
- **Employee Benefits**  
Entitlements applicable to annual leave and long service leave are measured on an undiscounted basis plus related on costs and expensed as the related service is provided.
- **Inventories**  
Inventories are stated at the lower of cost and current replacement cost. Inventories comprise branch canteen stocks and other trading activity and fundraising items.
- **Revenue**  
Revenue for services rendered from activities, childcare, memberships, fundraising and rentals are recognised at fair value of consideration received. Advance deposits or payments in advance are treated as deferred income.
- **Grants**  
Grants received on the condition that specified services are delivered or conditions fulfilled are considered a reciprocal transaction. Revenue is recognised as services are performed and at year end a liability is recognised until the service is delivered.
- **State Office Support Charge**  
A number of services such as internal audit, human resources, marketing, zone development management, financial reporting and expenses such as external audit, computer software and insurance are incurred at a state office level. These services and expenses are allocated to each branch relative to the size and profile of the branch via the State Office Support Charge.

#### NOTE 2 - CENTRAL FINANCE FUND

The group operates a centralised investment fund. Interest is paid on branch funds on a monthly basis. The group investments are held in bank deposits at call and term deposits.

Enmark  
Chartered  
Accountants

# Audited Financial Statements 3

## QUEENSLAND POLICE-CITIZENS YOUTH WELFARE ASSOCIATION BORNHOFFEN PCYC

### NOTE 3 - PROPERTY PLANT AND EQUIPMENT

	Cost	Accum Dep.	Carrying Amt 30/6/15	Carrying Amt 30/6/14
Work in Progress	173,382	0	173,382	182,920
Freehold Land	0	0	0	0
Buildings	1,716,913	0	1,716,913	1,450,961
Other Facilities	0	0	0	219,645
Catering Equipment	56,611	(40,584)	16,027	7,267
Electrical equipment	8,613	(8,613)	(0)	(0)
Fundraising equipment	0	0	0	0
Furniture & Fittings	53,516	(49,232)	4,284	7,846
General equipment	40,674	(25,060)	15,615	18,769
Office equipment	38,598	(32,465)	6,133	5,875
Activity equipment	73,421	(34,974)	38,447	49,040
IT Infrastructure	0	0	0	0
Motor vehicles	150,553	(119,549)	31,004	22,030
MAC Assets	0	0	0	0
	<b>2,312,282</b>	<b>(310,478)</b>	<b>2,001,804</b>	<b>1,964,352</b>



Enmark Pty Ltd

A.C.N. 104 728 550

PO Box 10118

Brisbane Adelaide Street

Brisbane Qld 4000

ph: 07 3229 5024

fax: 07 3221 8960

Independent Audit Report to the Queensland Police-Citizens Youth Welfare Association –  
Bornhoffen Branch

#### Scope

I have audited the financial report comprising the Balance Sheet, Income Statement and accompanying notes of the Bornhoffen Branch of the Queensland Police-Citizens Youth Welfare Association for the year ended 30<sup>th</sup> June 2015. The Management Committee is responsible for the preparation and presentation of the financial report. I have conducted an independent audit of the financial report in order to express an opinion on them to the members of the Branch.

My audit has been conducted in accordance with Australian Auditing Standards in order to provide reasonable assurance as to whether the financial report is free of material misstatement. My procedures included examination, on a test basis, of evidence supporting the amounts and other disclosures in the financial report, and the evaluation of accounting policies and significant accounting estimates. These procedures have been undertaken to form an opinion whether in all material respects, the financial report in presented fairly, in accordance with the basis of accounting set out in note 1 to the financial so as to present a view that is consistent with my understanding of the Branch's financial position and performance and the result of its operations. The contents of this financial report are to be combined with those of the other branches of the Queensland Police-Citizens Youth Welfare Association to form the statutory report of the Association as a whole.

#### Independence

I am independent of the Association, and have met the independence requirements of Australian professional ethical pronouncements and the Corporations Act 2001.

#### Audit Opinion

In my opinion, the financial report of the Bornhoffen Branch of the Queensland Police-Citizens Youth Welfare Association is in accordance with the group operating instructions so as to give a true and fair view of the Branch's financial position as at 30<sup>th</sup> June 2015 and its performance for the year ended on that date consistent with the basis of accounting adopted.

Mark O'Shea  
Chartered Accountant

Registered Company Auditor  
Brisbane  
Dated 24 August 2015





# Wagawn Hall Concept Plan

Our Bornhoffen Master Redevelopment Plan includes the replacement of the Wagawn Multipurpose Hall. The current dining hall building is a demountable building with poor acoustics, function and accessibility. The building contains asbestos in its structural panels and is not a practical or economic option for refurbishment.

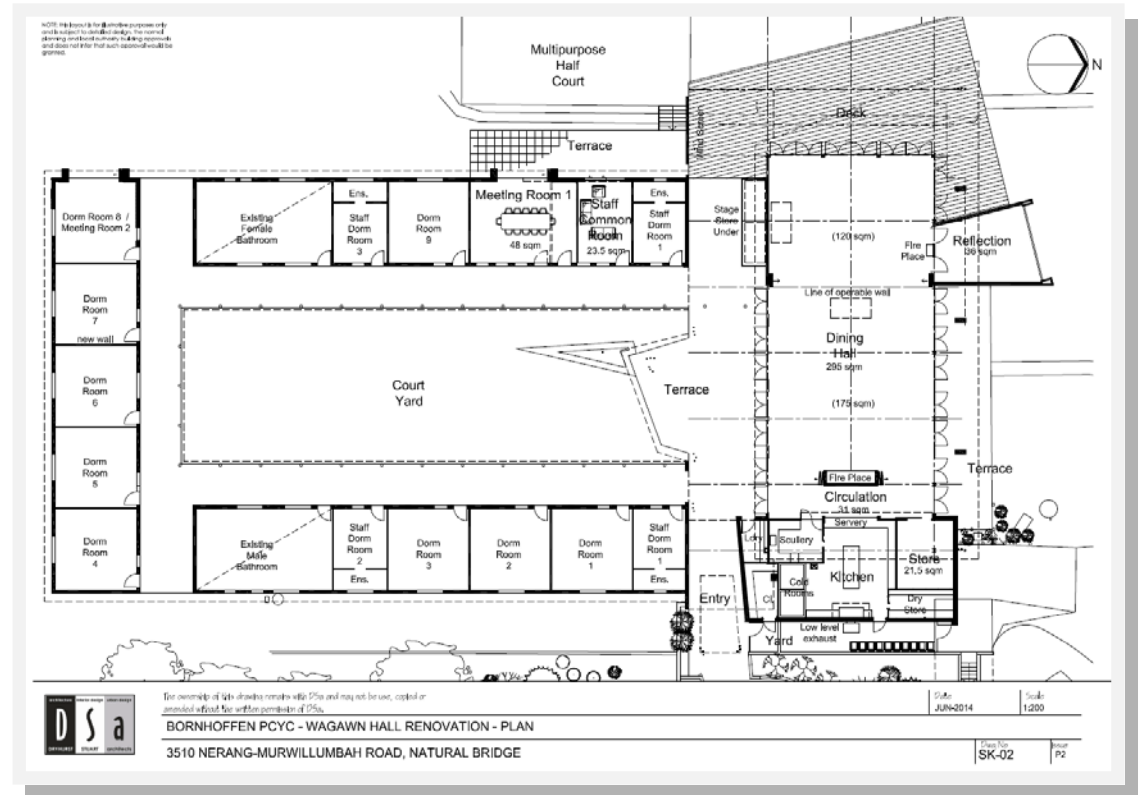
We worked with Dryhurst Stuart Architects to develop a concept plan and 3D drawings. Our staff team provided important input into the design, functionality and materials.

We worked with the Gold Coast City to establish that the redevelopment can take place within the existing town planning approvals of the site. Thanks to Councillor Glenn Tozer (our local Gold Coast City Councillor) for his assistance and support.

The total project cost is estimated to be between \$1.1 to \$1.5 million. We will require a major capital campaign to achieve this goal.

During 2014-15, investigations were made into possible capital campaign fundraising strategies. In June 2015, our Board of Directors decided to form a Board sub-committee specifically to provide support to assist with fundraising for this project.

We're looking forward to this additional support from the PCYC organisation to help achieve this project in the future.



# Wagawn Hall Concept Plan



The ownership of this drawing remains with DSA and may not be used, copied or amended without the written permission of DSA.

BORNHOFFEN PCYC - WAGAWN HALL RENOVATION

3510 NERANG-MURWILLUMBAH ROAD, NATURAL BRIDGE

CONCEPT PERSPECTIVES

Date  
JUN-2014

Scale  
NTS

NOTE: This layout is for illustrative purposes only and is subject to detailed design, the normal planning and local authority building approvals and does not infer that such approval would be granted.

Dwg No  
SK-11

Issue  
P2



# Wagawn Hall Concept Plan



The ownership of this drawing remains with D S a and may not be used, copied or amended without the written permission of D S a.

BORNHOFFEN PCYC - WAGAWN HALL RENOVATION

3510 NERANG-MURWILLUMBAH ROAD, NATURAL BRIDGE

CONCEPT PERSPECTIVES

Date  
JUN-2014

Scale  
NTS

NOTE: This layout is for illustrative purposes only and is subject to detailed design, the normal planning and local authority building approvals and does not infer that such approval would be granted.

Draw No  
SK-12

Issue  
P2

# Wagawn Hall Concept Plan



The ownership of this drawing remains with DSA and may not be used, copied or amended without the written permission of DSA.

**BORNHOFFEN PCYC - WAGAWN HALL RENOVATION**

**3510 NERANG-MURWILLUMBAH ROAD, NATURAL BRIDGE**

**CONCEPT PERSPECTIVES**

Date  
JUN-2014

Scale  
NTS

NOTE: This layout is for illustrative purposes only and is subject to detailed design, the normal planning and local authority building approvals and does not infer that such approval would be granted.

Draw No  
SK-13

Issue  
P2



# Wagawn Hall Concept Plan



The ownership of this drawing remains with D S a and may not be used, copied or amended without the written permission of D S a.

BORNHOFFEN PCYC - WAGAWN HALL RENOVATION

3510 NERANG-MURWILLUMBAH ROAD, NATURAL BRIDGE

CONCEPT PERSPECTIVES

Date  
JUN-2014

Scale  
NTS

NOTE: this layout is for illustrative purposes only and is subject to detailed design, the normal planning and local authority building approvals and does not infer that such approval would be granted.

Dwg No  
SK-10

Issue  
P2



The Gold Coast Hinterlander - September 2014

## Bornhoffen at Numinbah growing youth into people

Bornhoffen is Police-Citizens Youth Club's (PCYC) Leadership Development Centre located at Natural Bridge in the Gold Coast hinterland.

The former dairy property 'Bornhoffen' was purchased by PCYC in 1978 and it's estimated that more than 500,000 people have had a 'Bornhoffen' experience over the past three and a half decades.

Bornhoffen Co-Manager, Mick Foran, said, "Our purpose is to inspire young people to be self-aware, to build their social skills and to contribute positively to their community."

"We do this through our leadership development programs in partnership with primary schools, high schools, community groups and our own PCYCs.

The centre's staff work with a diverse range of groups and a spectrum of young people from young leaders, mainstream school students right through to young people engaging in anti-social or criminal behaviour.

"We also have bunk-style group accommodation and conference/retreat facilities for groups up to 200 people or more – were used by all sorts of group – schools, community groups, churches, family reunions, special

interest groups, creative arts groups, you name it.

"We've got an awesome catering team who can provide freshly cooked, hearty and nutritious meals or we allow groups to self-cater where this is done on a non-commercial basis."

The setting is most spectacular, 350m above sea level with the surrounding mountains of the Lamington and Springbrook National Parks rising steeply to over 1,000m.

Pictured at right – Young people nominated from Police-Citizens Youth Clubs from across Queensland at the completion of their five day State Youth Leadership Program.



Lunch, coffee,

**Bornhoffen PCYC Leadership Development Centre**

3510 Nerang Murwillumbah Road NATURAL BRIDGE QLD 4211

**P: (07) 5533 6154 | E: [admin@bornhoffenpcyc.org.au](mailto:admin@bornhoffenpcyc.org.au) | [www.bornhoffenpcyc.org.au](http://www.bornhoffenpcyc.org.au)**